



DESS

> DENTAL SMART SOLUTIONS



Catalogue
AURUMBase® 2023



AURUMBase®

There are numerous clinical situations where the long-axis of the implant results in an unfavorable location of the prosthetic screw access hole. One solution might be to sacrifice the retrievability and cement over the access hole or compromise the aesthetic results.

Now, DESS introduces the AURUMBase® system, which allows for an angular adjustment of up to 25°. The specially designed Torx®-based screw and driver concept will retain the ability to use full recommended torque even at full angulation.

The AURUMBase® is made of titanium grade V ELI and has a gold-anodised surface finishing that will further optimise the appearance, especially in the aesthetic area. The shaft surface also features the patented and well proven SelectGrip® for optimal cement retention.

To facilitate prosthetic work using traditional casting procedures, AURUMBase® pre-formed castable caps can be used. They are delivered in multi-packs of 5 pieces, in a straight version as well as pre-angled with 10° and 20°. They are designed to optimise the placement and tightening of the AURUMBase® screw with the special driver.

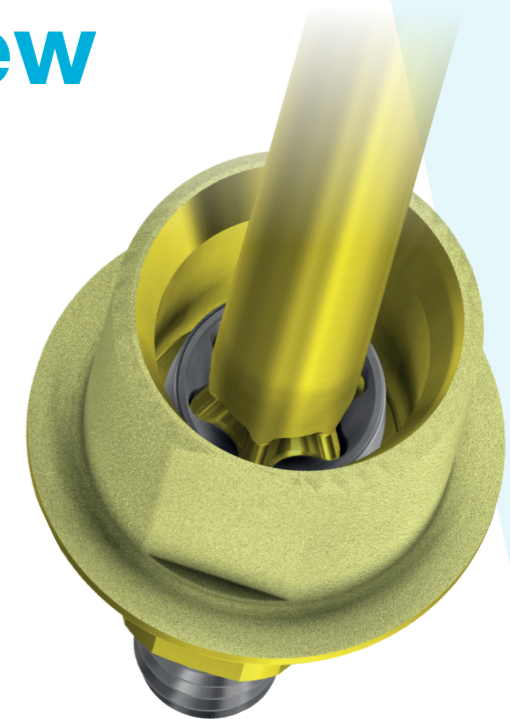
To optimise the possible angulation of the access hole, the shaft of the AURUMBase® has been reduced to only 3mm, but with a bonding area of more than 33mm², bigger than other higher but sliced solutions.

During AURUMBase® development process, we conducted both de-bonding and static fatigue tests comparing the results, not only to DESS® standard Ti-Base, but also to competitors' components. A dynamic fatigue test was also conducted and passed the required 5 million load cycles.

For angulated screw channel access

Made in titanium grade V ELI with a gold anodised hue surface.

Available for most platforms with engaging and non-engaging versions.

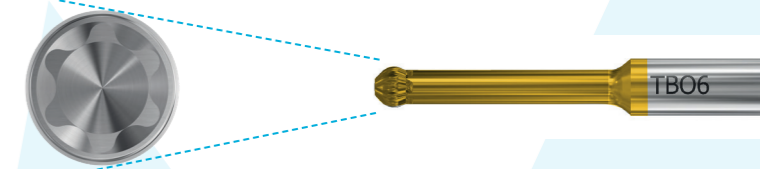


AURUMBase® Castables

Unique, pre-formed castable caps in straight, 10° and 20° angles for non CAD/CAM procedures.

AURUMBase® Driver and screw system

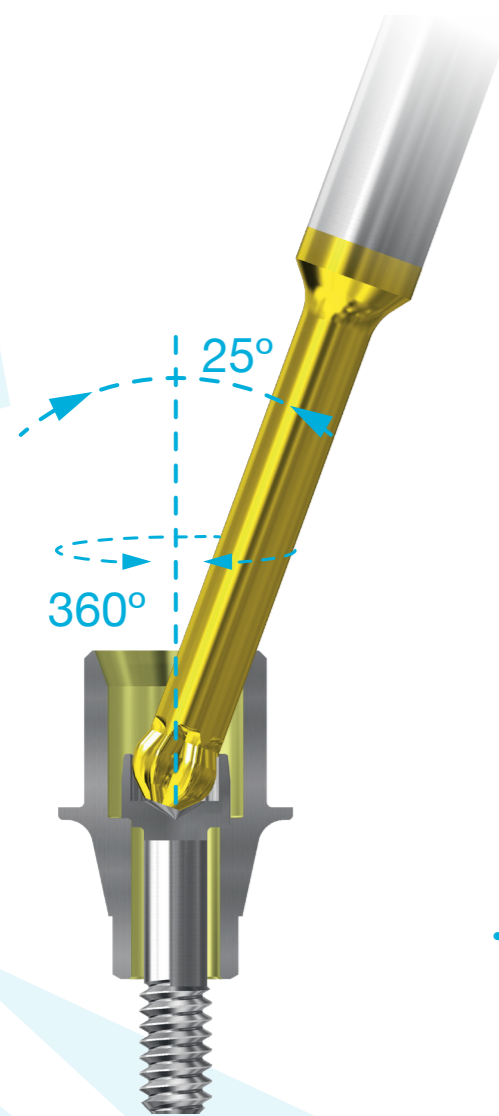
The AURUMBase® TB06 drivers follow strictly the Torx® ball system design parameters. Torx® has set the global standard in reliability. This will assure optimal fastening torque even at maximum angle of the driver.



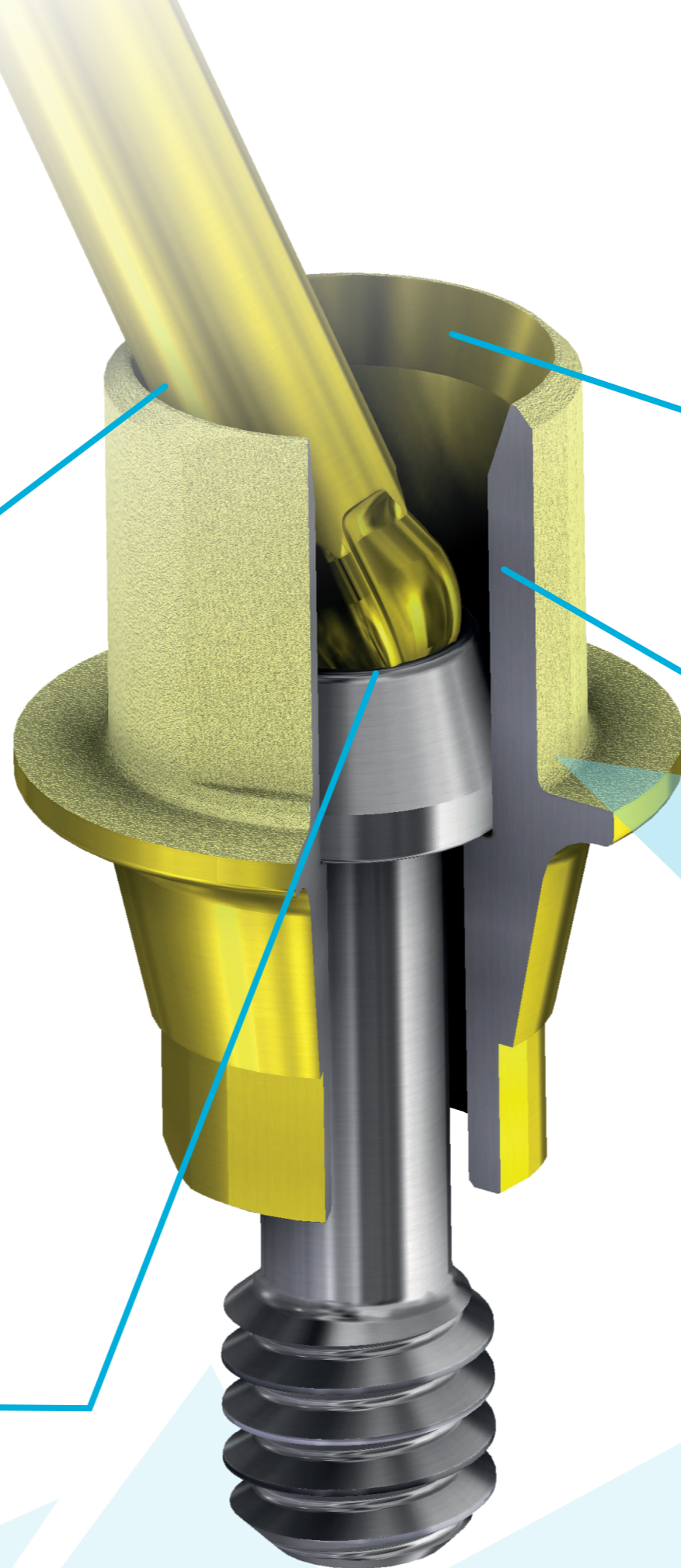
AURUMBase[®]

Features & benefits

Up to 30% reduction in the emergence hole design within CAD libraries to further improve the flexibility and aesthetic outcome.

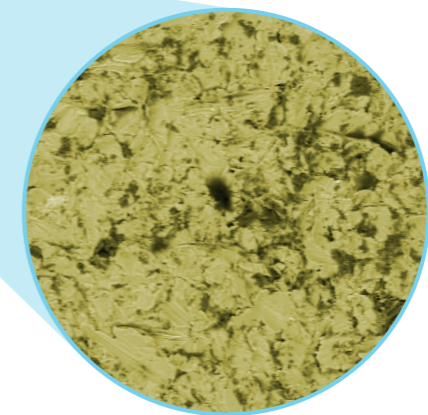


Torx[®] based screw and driver that allow for up to 25° angulation with full recommended torque.



bevelled edge to optimize the driver angulation

Made of Titanium Grade V ELI with a gold anodised surface finish.



Cement shaft with patented SelectGrip[®] surface for optimal crown retention

Technical Solutions

Torx® AURUMBase® Screw system

Screws have a flat seat to minimise tension when there is a slight misalignment between screw retained structures and implants. A flat design is more forgiving and transfers the torque to an optimal preload of the screw. A conical screw requires a perfect alignment and centering between the screw and seat.



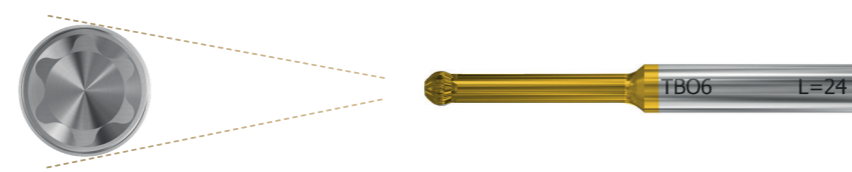
AURUMBase®

Torx® ball AURUMBase® Driver and screw system

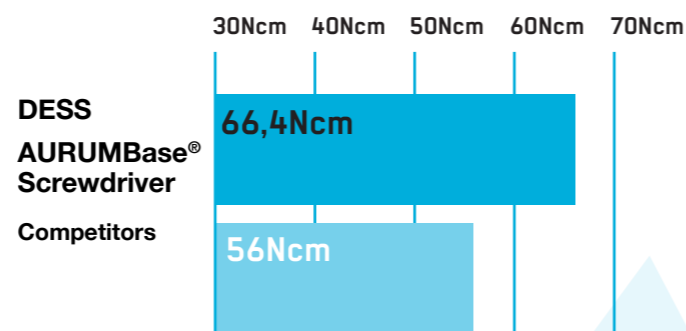
Screws feature the standard ISO 10.664 Torx®06 screw head and can be used in straight operations with any standard Torx®06 driver.

The AURUMBase® TB06 drivers follow strictly the Torx® ball system design parameters. Torx® has set the global standard in reliability. This will assure optimal fastening torque even at maximum angle of the driver.

All AURUMBase® screws and screwdrivers are compatible with other systems on the market accomplishing ISO 10.664.



Average Breaking Torque for Drivers

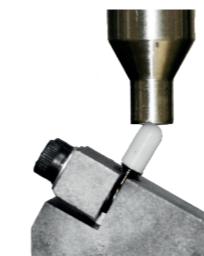
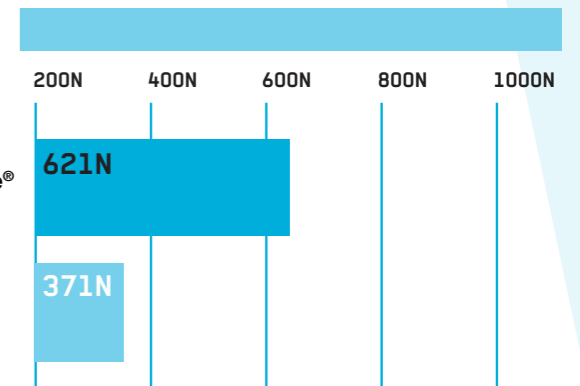


Bond and Fatigue strenght



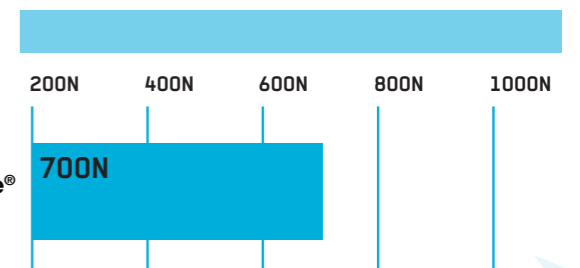
DESS AURUMBase® has comparable bonding retention to DESS Ti-Base and clearly superior to a competitor brand with a 50% longer cement shaft once sandblasted.

Bonding retention



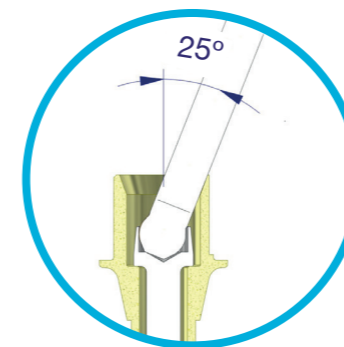
No significant difference in static fatigue strength between DESS® AURUMBase® and DESS® Ti-Base in standard ISO 13485 test using Zirconia caps despite AURUMBase® having a 33% shorter shaft.

Static Fatigue Test

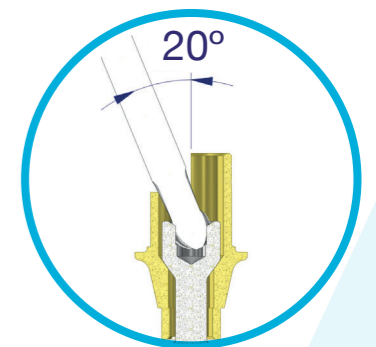


AURUMBase®

Graphic illustration comparing DESS® AURUMBase® solution and the competitors' common design, where part of the cylinder is cut open to allow the angulation of the screwdriver. This design does not increase the possible tilt whilst presenting other possible mechanical disadvantages. The 'cylinder cut' design restricts the rotational freedom of the entry angle.

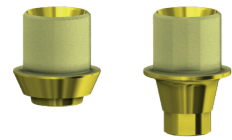


AURUMBase®



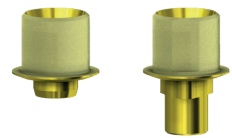
Competitors' design

AURUMBase®



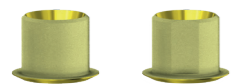
NobelActive® NobelReplace® CC Active Hex

| | NP | RP |
|--|--------|---------|
| | 3.5 | 4.3/5.0 |
| | 36.041 | 36.042 |
| | 37.041 | 37.042 |
| | 19.441 | 19.442 |



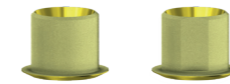
Nobel Replace Select™ Tri-Lobe

| | NP | RP | WP |
|--|--------|--------|--------|
| | NP/3.5 | RP/4.3 | WP/5.0 |
| | 36.004 | 36.005 | 36.006 |
| | 37.004 | 37.005 | 37.006 |
| | 19.460 | 19.405 | 19.405 |



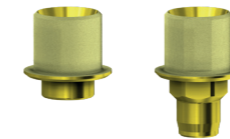
NobelBrånemark® External Hex Universal

| | NP | RP |
|----------|----------|----------|
| | NP/3.5 | RP/4.1 |
| GH 0,3mm | 36.001 | 36.002 |
| GH 1,5mm | 36.001/2 | 36.002/2 |
| GH 2,5mm | 36.001/3 | 36.002/3 |
| GH 0,3mm | 37.001 | 37.002 |
| GH 1,5mm | 37.001/2 | 37.002/2 |
| GH 2,5mm | 37.001/3 | 37.002/3 |
| | 19.401 | 19.402 |



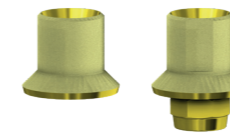
3i Osseotite® External Hex USA

| | | NP | RP | WP |
|----------|--|----------|----------|--------|
| | | 3.4 | 4.1 | 5.0 |
| GH 0,3mm | | 36.011 | 36.012 | 36.013 |
| GH 1,5mm | | 36.011/2 | 36.012/2 | |
| GH 2,5mm | | 36.011/3 | 36.012/3 | |
| GH 0,3mm | | 37.011 | 37.012 | 37.013 |
| GH 1,5mm | | 37.011/2 | 37.012/2 | |
| GH 2,5mm | | 37.011/3 | 37.012/3 | |
| | | 19.402 | 19.402 | 19.402 |



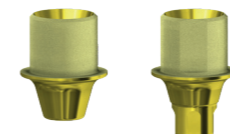
3i Certain® Internal Hex "CLICK"

| | | NP | RP | WP |
|--|--|--------|--------|--------|
| | | 3.4 | 4.1 | 5.0 |
| | | 36.014 | 36.015 | 36.016 |
| | | 37.014 | 37.015 | 37.016 |
| | | 19.438 | 19.438 | 19.438 |



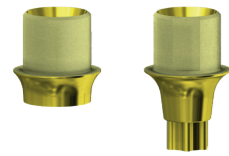
Straumann® Tissue Level & synOCTA® Octagon

| | | RN | WN |
|--|--|---------|---------|
| | | 4.1/4.8 | 4.8/6.5 |
| | | 36.046 | 36.047 |
| | | 37.009 | 37.045 |
| | | 19.446 | 19.446 |



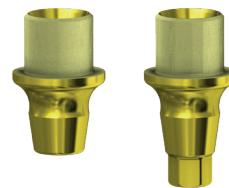
Straumann® Bone level® Conical BL

| | | NP | RP |
|--|--|--------|------------|
| | | NC/3.3 | RC/4.1-4.8 |
| | | 36.043 | 36.044 |
| | | 37.043 | 37.044 |
| | | 19.443 | 19.443 |



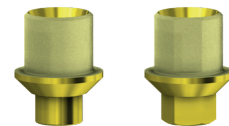
Straumann® BLX
Conical BLX

| | | RB | WB | RB/WB |
|----------|--|------------|------------|--------------|
| | | 3.5 | 4.5 | |
| GH 1,5mm | | 36.062 | 36.063 | 36.062 |
| GH 1,5mm | | 37.062 | 37.063 | 37.062 |
| | | 19.441 | 19.441 | 19.441 |



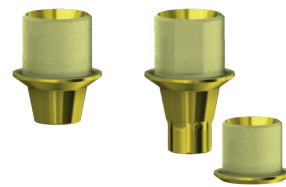
Neodent Grand Morse®
NEO GM

| | | | GM |
|----------|--|--|-----------|
| GH 2,5mm | | | 36.035/3 |
| GH 2,5mm | | | 37.035/3 |
| | | | 19.444 |



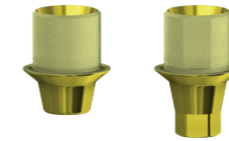
Zimmer® Screw-vent
Internal Hex USA

| | | NP | RP | WP |
|--|--|------------|------------|------------|
| | | 3.5 | 4.5 | 5.7 |
| | | 36.017 | 36.018 | 36.019 |
| | | 37.017 | 37.018 | 37.019 |
| | | 19.417 | 19.417 | 19.417 |



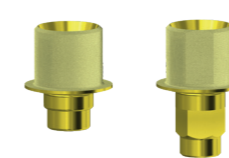
Astra Tech implant system™ EV
Conic EVO

| | | EV/3.6 | EV/4.2 | EV/4.8 |
|------------------------|--|---------------|---------------|---------------|
| | | 3.6 | 4.2 | 4.8 |
| | | 36.059 | 36.060 | 36.061 |
| | | 37.059 | 37.060 | 37.061 |
| On uniabutment® | | 36.058 | | |
| | | 19.441 | 19.460 | 19.461 |
| On uniabutment® | | 19.331 | | |



Astra Tech Osseospeed™
Internal Hex Conic

| | | RP | WP |
|--|--|----------------|----------------|
| | | 3.5-4.0 | 4.5-5.0 |
| | | 36.024 | 36.025 |
| | | 37.024 | 37.025 |
| | | 19.441 | 19.425 |



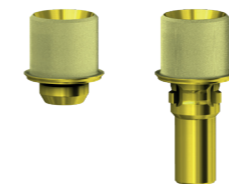
Xive®
Internal Hex FD

| | | NP | RP | WP |
|--|--|------------|------------|------------|
| | | 3.4 | 3.8 | 4.5 |
| | | 36.038 | 36.039 | 36.040 |
| | | 37.038 | 37.039 | 37.040 |
| | | 19.438 | 19.438 | 19.438 |



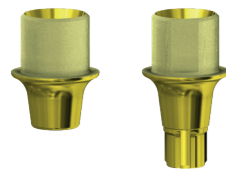
Osstem® TS / Hiossen® ET
Conic OSS

| | | Mini | STD |
|--|--|-------------|----------------|
| | | Mini | Regular |
| | | 36.072 | 36.073 |
| | | 37.072 | 37.073 |
| | | 19.444 | 19.444 |



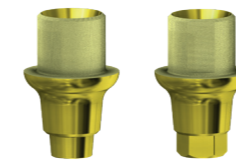
Camlog®
Internal Cam

| | | 3.8 | 4.3 |
|--|--|------------|------------|
| | | 3.8 | 4.3 |
| | | 36.065 | 36.066 |
| | | 37.065 | 37.066 |
| | | 19.444 | 19.444 |



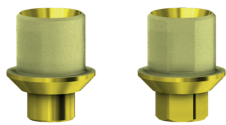
Conelog®
Internal Con

| | NP | RP | WP |
|--|---------|---------|---------|
| | 3.3 | 3.8/4.3 | 5.0 |
| | 36.074* | 36.075* | 36.076* |
| | 37.074* | 37.075* | 37.076* |
| | 19.474 | 19.474 | 19.474 |



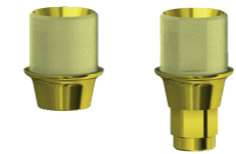
Megagen AnyRidge®
Conic Anyr

| | |
|--|--------|
| | 36.057 |
| | 37.057 |
| | 19.460 |



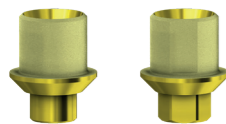
Biohorizons® internal
Internal hex BH

| | NP | RP | WP |
|--|--------|--------|--------|
| | 3.5 | 4.5 | 5.7 |
| | 36.087 | 36.088 | 36.089 |
| | 37.087 | 37.088 | 37.089 |
| | 19.417 | 19.417 | 19.417 |



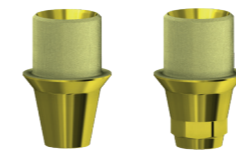
Medentis ICX®
Conic IC

| | | |
|----------|--|---------|
| GH 2,2mm | | 36.080* |
| GH 0,9mm | | 36.180* |
| GH 2,2mm | | 37.080* |
| GH 0,9mm | | 37.180* |
| 2,2mm | | 19.444 |
| 0,9mm | | 19.443 |



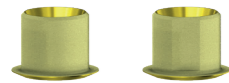
MIS® seven
Internal hex MI

| | NP | SP |
|--|--------|----------|
| | 3.3 | 3.75-4.2 |
| | 36.017 | 36.018 |
| | 37.017 | 37.018 |
| | 19.417 | 19.417 |



Dentium Superline™ & Implantium®
Conic DENT

| | RP |
|--|---------------------|
| | 3.6 3.8 4.0 4.5 5.0 |
| | 36.090* |
| | 37.090* |
| | 19.405 |



Phibo® TSH®
External Hex PH

| | NP | SP | WP |
|--|-----------|-----------|-----------|
| | S2 | S3-S4 | S5 |
| | 36.030* | 36.031* | 36.032* |
| | 36.030/2* | 36.031/2* | 36.032/2* |
| | 36.030/3* | 36.031/3* | 36.032/3* |
| | 37.030* | 37.031* | 37.032* |
| | 37.030/2* | 37.031/2* | 37.032/2* |
| | 37.030/3* | 37.031/3* | 37.032/3* |
| | 19.403 | 19.402 | 19.402 |

Multi-Unit



| | | | |
|--|--|--------|--------|
| | | 36.007 | 36.054 |
| | | 19.306 | 19.331 |

Kunststoffhülse für AURUMBase®



| | | |
|-----------|------------|-----------|
| Pack de 5 | 0° | 33.100-P5 |
| Pack de 5 | 10° | 33.101-P5 |
| Pack de 5 | 20° | 33.102-P5 |



| | | |
|-----------|------------|-----------|
| Pack de 5 | 0° | 33.200-P5 |
| Pack de 5 | 10° | 33.201-P5 |
| Pack de 5 | 20° | 33.202-P5 |

Straumann® Tissue Level & synOCTA®



| Torx® ball Screwdriver | 20 mm | 24 mm | 30 mm | 35 mm |
|------------------------|----------|----------|----------|----------|
| | DT20TB06 | DT24TB06 | DT30TB06 | DT35TB06 |

All DESS products are manufactured according to ISO 9001 and ISO 13485 with CE marking for all products Class IIb

All DESS® AURUMBase® screws and screwdrivers are based on the standard ISO 10664
3i® and 3i Certain®, Miniplant®, MicroMiniplant™ and Osseotite® are registered trademarks of 3i Implant Innovations, USA

ASTRA TECH™, OsseoSpeed™, ANKYLOS® C/X, XiVE®, FRIADENT®, ASTRATECH implant system™ EV and UniAbutment®

Cerec® are registered trademarks of DENTSPLY SIRONA Implants

BioHorizons® is a registered trademark of BioHorizons, INC.

Brånemark System®, NobelReplace® and Replace Select™, NobelActive™, NobelReplace® CC, NobelSpeedy™ and Multi-unit® are registered trademarks of Nobel Biocare AB,

Neodent®, Grand Morse®, Straumann® and synOcta® are registered trademarks of Straumann Holding AG, Switzerland

MIS® is a registered trademark of MIS Implant Technologies Ltd.

Zimmer Screw-Vent® and SwissPlus® are registered trademarks of Zimmer Dental INC, USA

Dyna® is a registered trademark of Dyna Dental Engineering BV

Locator® is a registered trademark of ZEST IP Holdings

Camlog® and Conelog® are registered trademarks of CAMLOG Biotechnologies AG

Megagen® is a registered trademark of MEGAGEN IMPLANT CO. LTD

TORX® is a trademark of ACUMENT INTELLECTUAL PROPERTIES, LLC

Bego Semados® is a registered trademark of BEGO GmbH & Co. KG

Anthogyr® is a registered trademark of Anthogyr SAS

Medentis ICX® is a registered trademark of medentis medical GmbH

Osstem®, Hiossen® is a registered trademark of OSSTEM IMPLANT CO. LTD

Dentium® is a trademark of Dentium Co. Ltd.

GOBALD® is a trademark of Global D SASU.

Biotech Kontakt® is a trademark Biotech Dental SAS.

BTI® is a trademark BTI Biotechnology Institute.

PHIBO® is a trademark PHIBO Dental Solutions S.L.

DESS products can be used only by licensed dentists, physicians and labs.

Please refer ever to the instructions of use available on the website

www.dessdental.com

or supplied with the product.

Some products may not be available in your country. Some of the products are cleared for US and Canada.

Please contact your local distributor for more details.



