

printo[®] dent

Generative Resin GR-17.1 temporary It

Instructions for use
Gebrauchsanweisung
Mode d'emploi
Instrucciones de uso
Istruzioni per l'uso

pro^{3d}ure medical

Materials are our DNA!

GB 1. Intended use / Indication

Light-curable polymerizable resin intended to be used in conjunction with extra-oral curing light equipment for the fabrication, by additive manufacturing, of dental appliances. **printo[®] GR-17.1 temporary It** is indicated for the fabrication, by additive manufacturing, of temporary dental restorations, and for the fabrication of preformed denture teeth to be used in a denture.

2. Contraindication

printo[®] GR-17.1 temporary It restorations are contraindicated ...

1. ... if a patient is known to be allergic to any of the ingredients.
2. ... for bridges with more than one pontic.
3. ... for every application that is not part of the indication (see above).

3. Patient Target Group

Persons being treated in the context of a dental procedure.

4. Intended Users

Dentist, dental technician

5. Requirements

Software – information available from:

exocad GmbH · Julius-Reiber-Straße 37, 64293 Darmstadt, Germany

Hardware (3D Printing) – information available from:

ASIGA · 2/19-21 Bourke Road, Alexandria, NSW 2015, Australia

Hardware (Post Curing) – information available from:

pro3dure medical (CD-1, CD-2) · Am Burgberg 13, D-58642 Iserlohn, Germany

Additional specifications on www.pro3dure.com.

6. Material

printo[®] GR-17.1 temporary It consists of functional methacrylic resins and inorganic fillers with particle sizes from 0.4 to 3 microns.

7. Geometric presetting

Connector areas (minimum):

anterior bridges 12 mm²
posterior bridges 14 mm²

Minimum wall thickness:

occlusal 1.5 mm (central fissure)
circumferential 1 mm

8. Material parameters

Radiation penetration depth controllable by exposure time

≥ 100 µm

≥ 125 µm

9. Manufacturing process (fig. 1–10)

1. Prepare data (CAD & build preparation).
2. Choose process parameters (build style, etc.).
3. Transfer prepared data to 3D printing device.
4. Prepare 3D printing – shake bottle.
5. Fill resin tank of 3D printing device.
6. Build the parts.
7. Clean parts (with IPA ≥ 97 % or equivalent cleaning agent) approx. 4 min. in an ultrasonic bath or equivalent device – precleaning recommended.
8. Dry parts (with compressed air until no residues of IPA or equivalent cleaning agent).
9. Post curing (10 min.): inert atmosphere recommended (use adequate light curing device).
10. Finish parts.

10. Individualization and cementation

The temporary restorations can be individualized by light curing composite materials. The reduction of the restoration should not exceed 0.3 mm (incisal and vestibular area). Please follow the instructions of the light curing composite materials. For cementation common provisional dental cements (free of Eugenol) and adhesives are suitable. The inner areas of the crown should be conditioned by sandblasting or other commonly used techniques. Please follow the instructions and indications of the corresponding manufacturers.

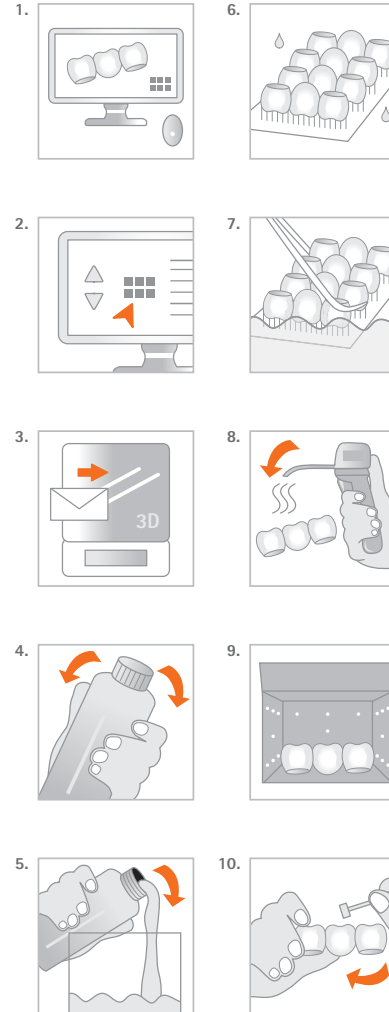
11. Notice

Please follow the instructions provided by the software manufacturer in terms of parameter settings and design recommendations. Please follow the instructions provided by the hardware manufacturer in terms of parameter settings/printing & post curing recommendations. To avoid detrimental effects on material quality do not expose the liquid material to irradiation under any circumstances. Deviations from the described manufacturing processes or storing conditions may lead to different mechanical and optical properties of the material. Ensure personal protective gear during processing. According to the EU Medical Devices Regulation, users/patients are obliged to report serious events with a medical device to the manufacturer and to the competent authority of the country in which they occurred. **Caution:** The lot number and the best before date are indicated on each packaging. In case of claims please always indicate the lot number of the product. Do not use the product after expiry of the best before date. Avoid breathing dust/fume/gas/mist/vapours/spray. Wash hands thoroughly after handling. Use only outdoors or in a well-ventilated area. Contaminated work clothing should not be allowed out of the workplace. Avoid release to the environment. Wear protective gloves/protective clothing/eye protection/face protection. IF ON SKIN: Wash with plenty of soap and water. IF INHALED: Remove person to fresh air and keep comfortable for breathing. IF IN EYES: Rinse cautiously with water for several minutes. Remove contact lenses, if present and easy to do. Continue rinsing. Call a POISON CENTER or doctor/physician if you feel unwell. Specific treatment (see information on this label). If skin irritation occurs: Get medical advice/attention. If skin irritation or rash occurs: Get medical advice/attention. If eye irritation persists: Get medical advice/attention. Take off contaminated clothing and wash it before reuse. Collect spillage. Store in a well-ventilated place. Keep container tightly closed. Store locked up. Dispose of contents/container according to official regulations.

12. Hazard statements

Causes skin irritation. May cause an allergic skin reaction. Causes serious eye irritation. May cause respiratory irritation. Toxic to aquatic life with long lasting effects.

UMDNS 16-697



Physical properties */
Physikalische Eigenschaften */
Propriétés physiques */
Propiedades físicas */
Proprietà fisiche *:

printo[®] GR-17.1 temporary It

■ Flexural strength/
Biegefestigkeit/
Résistance à la flexion/
Fuerza flexible/
Resistenza alla flessione:
> 100 MPa
DIN EN ISO 4049

■ Modulus of elasticity/
Elastizitätsmodul/
Module d'élasticité/
Modulo di elasticità/
Módulo de elasticidad:
> 2000 MPa
DIN EN ISO 4049

■ Water absorption/
Wasseraufnahme/
Absorption de l'eau/
Absorción de agua/
Assorbimento dell'acqua:
complies with/
erfüllt/
est conforme/
conforme a/
cumple con
DIN EN ISO 10477

■ Solubility/
Löslichkeit/
Solubilité/
Solubilidad/
Solubilità:
complies with/
erfüllt/
est conforme/
conforme a/
cumple con/
conforme a
DIN EN ISO 10477

■ Inorganic filler/
Anorganischer Füllstoff/
Charge inorganique/
Relleno inorgánico/
Rimpietto inorganico:
40.0 m-%

Ordering information/
Bestellinformationen/
Informations de commande/
Información sobre pedidos/
Informazioni sull'ordine:

printo[®] GR-17.1 temporary It

1 kg:
λ ≤ 405 nm

A1
REF: D1001441
A2
REF: D1001442
A3
REF: D1001443

A3.5
REF: D1001617
B1
REF: D1001618
B2
REF: D1001623
bleach
REF: D1001624

500 g:
λ ≤ 405 nm

A1
REF: D1001612
A2
REF: D1001613
A3
REF: D1001614
A3.5
REF: D1001620

B1
REF: D1001622
B2
REF: D1001625
bleach
REF: D1001626

* These data come from measurements of a representative sample that was determined as part of our quality assurance. / Diese Daten stammen aus Messungen einer repräsentativen Probe, die im Rahmen unserer Qualitätssicherung ermittelt wurden. / Ces données proviennent de mesures d'un représentant échantillon qui a été déterminé dans le cadre de notre assurance qualité. / Estos datos provienen de mediciones de una representante muestra que se determinó como parte de nuestra garantía de calidad. / Questi dati provengono dalle misurazioni di un rappresentativo campione che è stato determinato nell'ambito della nostra garanzia di qualità.
** According to internal design and requirements specifications / Gemäß internen Design- und Anforderungsspezifikationen / Selon la conception interne et les spécifications des exigences / Según especificaciones de diseño y requisitos internos / Secondo la progettazione interna e le specifiche dei requisiti.
*** on the basis of ... / in Anlehnung an ... / s'ispirando de ... / basado en ... / sulla base di ...
**** not applicable / nicht anwendbar / non applicable / no applicable / non applicabile



Manufacturer:
pro3dure medical GmbH
Am Burgberg 13 · 58642 Iserlohn, Germany
Phone: +49 (0)2374 920050-0

Distributor (US):
pro3dure medical LLC
9825 Valley View Road · Eden Prairie, MN 55344
Phone: 952-426-1928
info@pro3dure.com · www.pro3dure.com · Made in Germany

